

INTERPRETIVE MAP

Reconnaissance (1:20,000) Fish and Fish Habitat Inventory
Tributaries in the Sutherland River Watershed

(480-993600-*****)

Babine Lake (BABL) Watershed Group

Babine
Forest Products

Lakes Forest District

Map 1 of 5

Scale 1:20,000

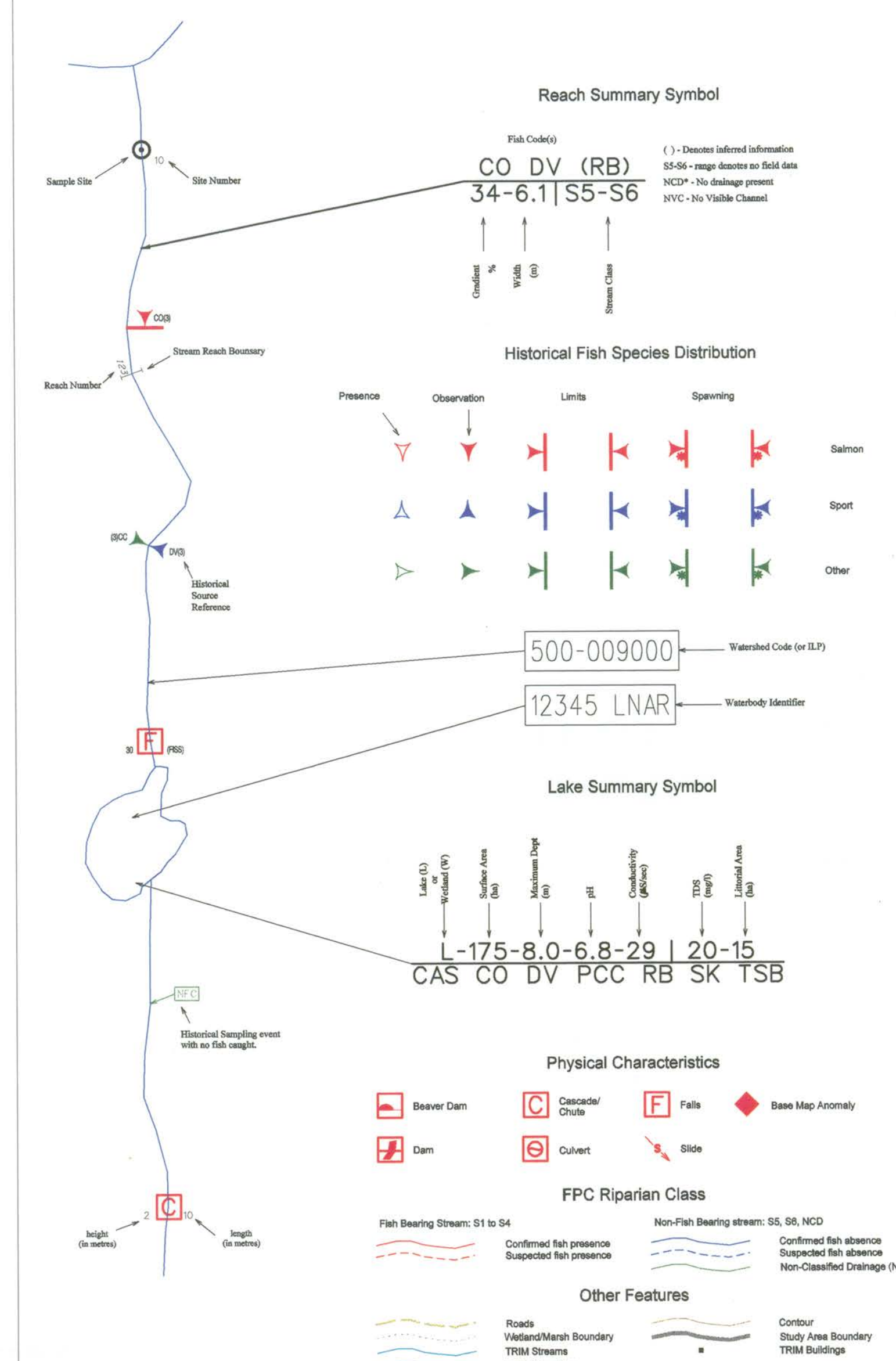
Projection: UTM NAD: 83
Contour Interval 20m

PROJECT CODE: 4119 DATE: March 31, 2001

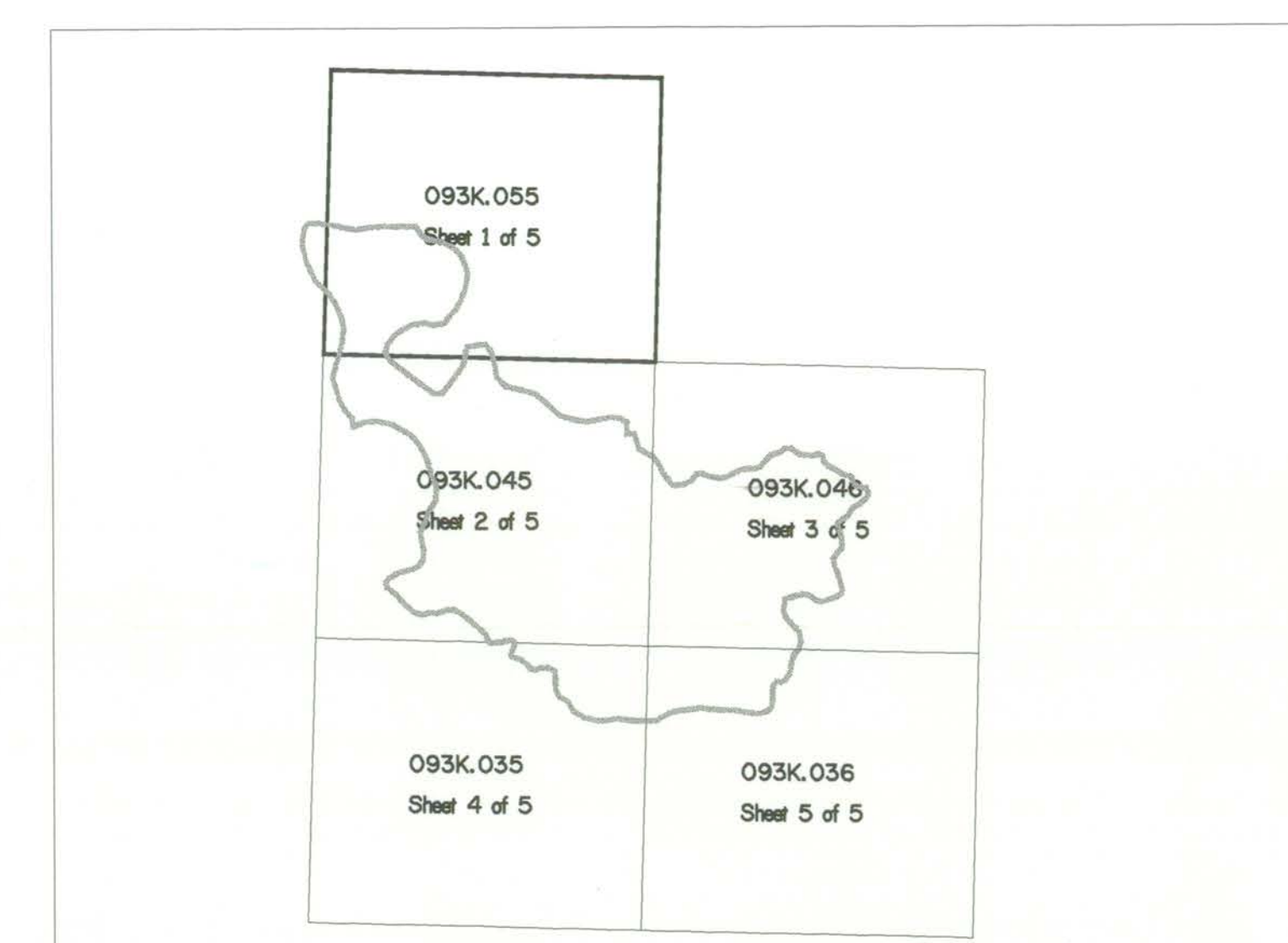
Project completed by:



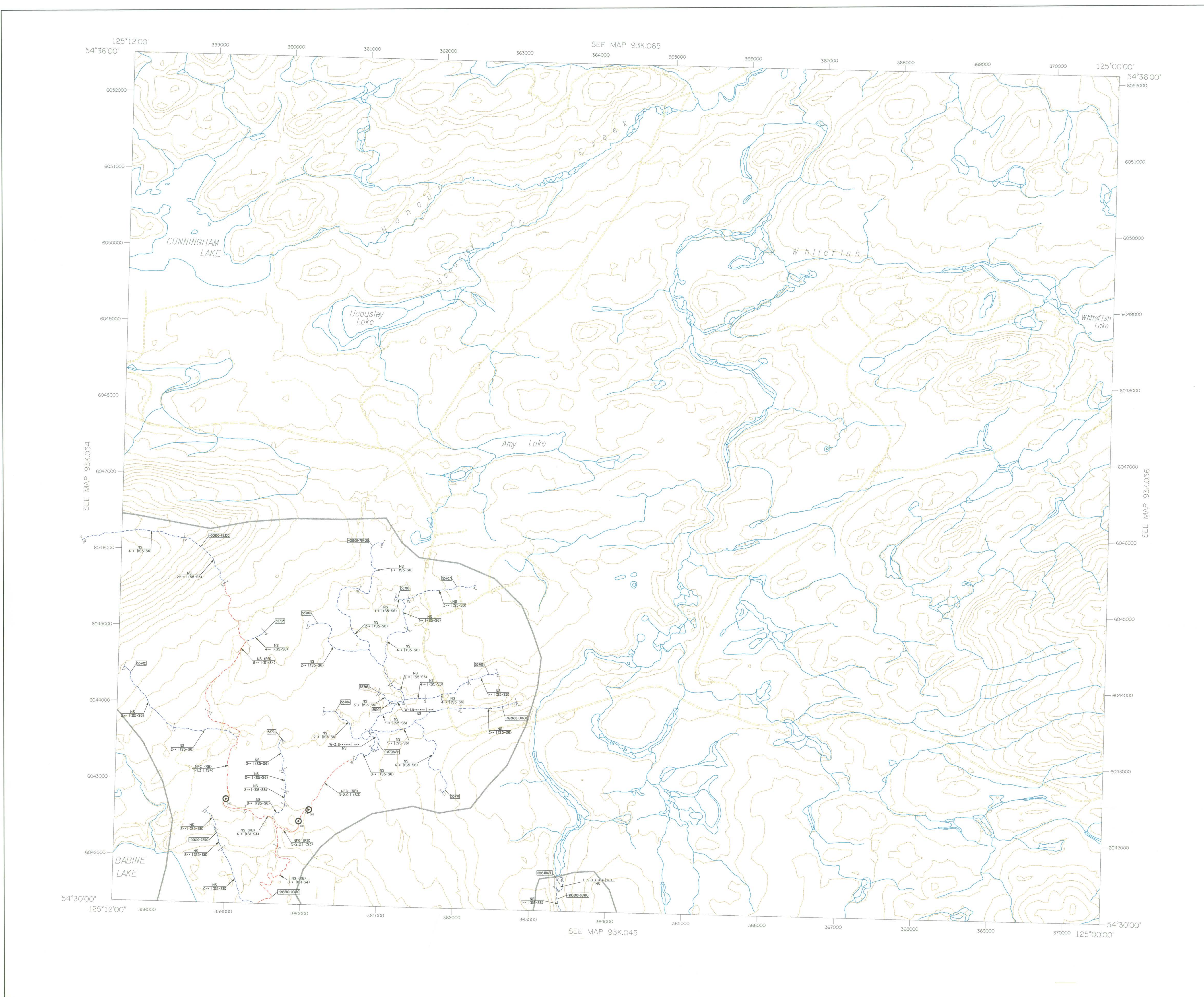
MAGELLAN DIGITAL MAPPING



Study Area Map



| | |
|-------------------------------|----------------|
| BASE: TR | STR SYM: INV |
| LOC: FDG | LK SYM: OTH |
| HAB: INV, SS | |
| FISH: INVG, SS | INV MGMT: MELP |
| DATE INV: OCT 2 - OCT 7, 2000 | |



| CODE | COMMON NAME |
|------|--------------------|
| NS | NOT SAMPLED |
| NFC | NO FISH CAUGHT |
| GB | PRECISE BOUNDARY |
| CO | COLD SALMON |
| KD | KOKANEE |
| MAV | MOUNTAIN WHITEFISH |
| RB | RAINBOW TROUT |
| SK | SOOTHY SALMON |
| ST | STERILE TROUT |

This product has been accepted as being in accordance with approved standards within the limits of Ministry Quality assurance procedure. Users are cautioned that interpreted information on this product developed for the purposes of the Forest Practices Code Act and Regulations, for example stream classifications, is subject to review by a statutory decision maker for the purposes of determining whether or not to approve an operational plan.